



**Michael Saunders & Company** Commercial  
LICENSED REAL ESTATE BROKER

6,000 SQ. FT. FREE STANDING INDUSTRIAL BLDG.



2122 WHITFIELD PARK AVENUE

SARASOTA, FLORIDA

SALE \$270,000

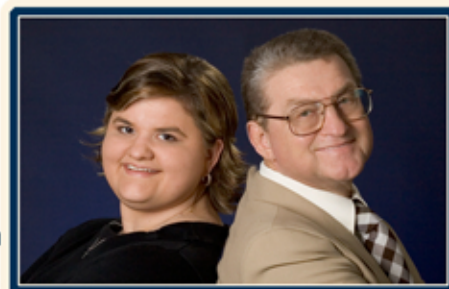
ALL PROPERTIES ARE FEATURED AT

[www.SARASOTA-INDUSTRIAL.COM](http://www.SARASOTA-INDUSTRIAL.COM)

941.957.3730  
OFFICE

ROBERTA "BJ" KOLTON

[RobertaKolton@MichaelSaunders.com](mailto:RobertaKolton@MichaelSaunders.com)



941.954.3830  
FAX

ROBERT "BOB" KOLTON

[RobertKolton@MichaelSaunders.com](mailto:RobertKolton@MichaelSaunders.com)

SPECIALIZING IN INDUSTRIAL & COMMERCIAL PROPERTIES

Price and availability is subject to change without notice. The information being provided to you is not guaranteed to be free of errors. No independent verification of the accuracy of any information or documentation is represented by the real estate licensee. If you intend to rely on the information provided, you are notified that you should confirm any such information directly with the appropriate governmental authority, the seller and its counsel, or your own independent advisors and counsel. Any copyrighted material shall remain such. Unless provided in writing, no information or documentation provided shall be distributed, disseminated, or reproduced to any third party.

32 NORTH OSPREY AVENUE • SARASOTA, FL 34236

## Property Information Sheet

2122 Whitfield Park Avenue  
Sarasota

**Square Feet: 6,000**

Sq. Ft. Office: 250

Sq. Ft. Shop: 5,750

**Land Size: 0.63 Acres** (27,500 sq. ft.)

**Zoning: L-M**

**Year Built: 1989**

**Electrical (Phase): Single**

Amps - Volts: 200 - 110/220

**Ceiling Height: 16'**

**Overhead Doors: 2 - 12' X 14'**

**Loading Dock: No**

**Fire Sprinklers: No**

**Parking: 12**

**Taxes: \$3,917.33**

**Occupancy: At Closing**

**Industrial Park: Whitfield Industrial Park**

**\$270,000.00**

Sales Price

**\$45.00**

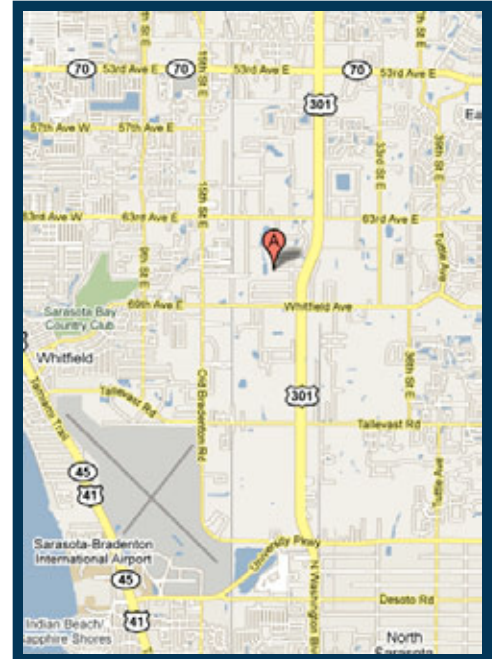
Per Sq. Ft.

**\$0.00**

Lease Rate

**\$0.00**

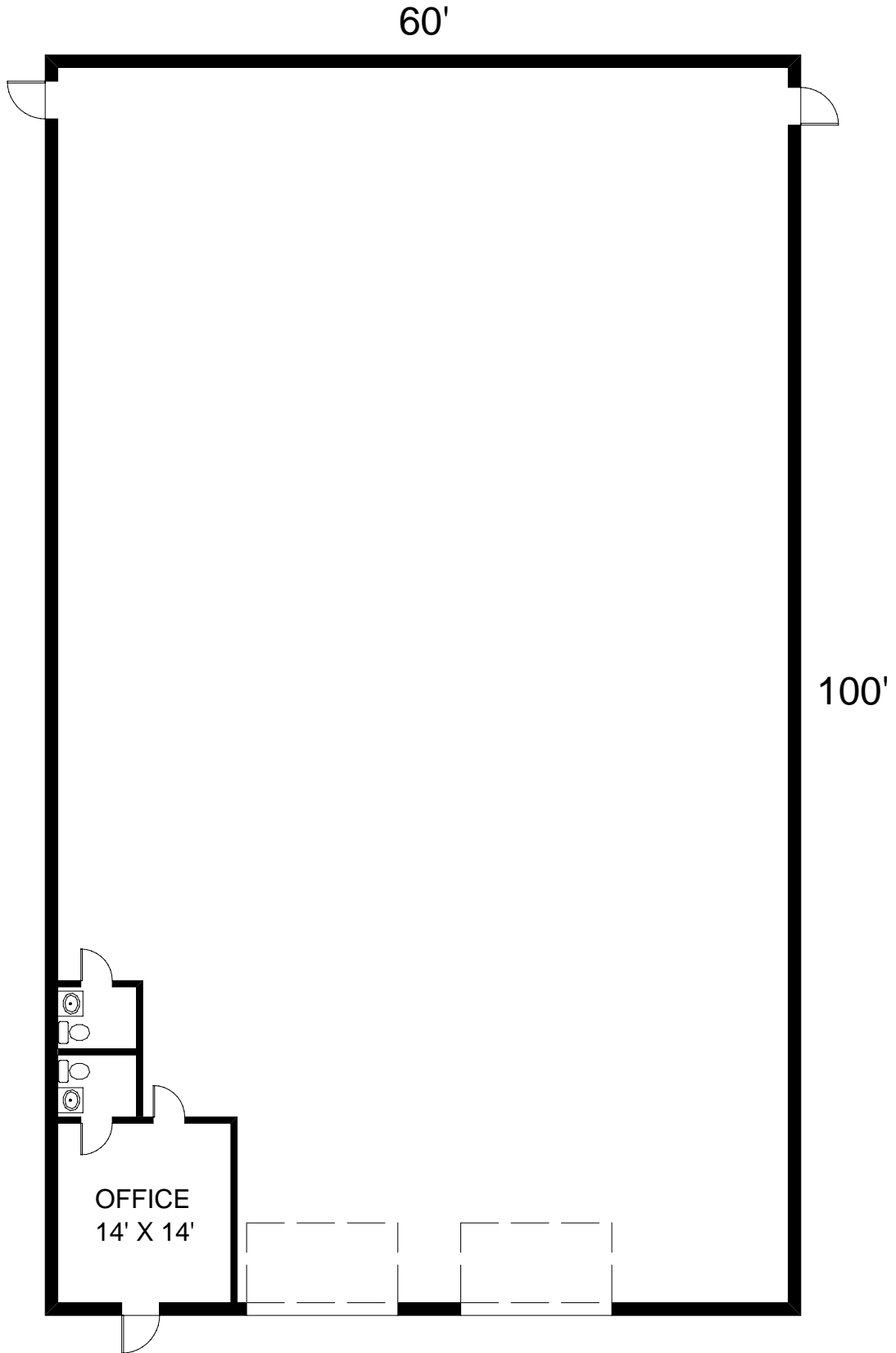
Per Sq. Ft.



Clean 6,000 sq. ft. free standing Industrial building with small office area. Fully insulated, clear span warehouse with 16' ceilings, two 12'x14' overhead doors, 3-phase convertor, air lines and sky lights. Conveniently located in the Whitfield Industrial Park, just off Highway 301 and Whitfield Ave.

Call Bob or Roberta Kolton at 941.957.3730 for more information.

THE INFORMATION CONTAINED HEREIN PRESENTED IS BELIEVED TO BE FACTUAL TO THE BEST OF OUR KNOWLEDGE BUT SHOULD NOT BE CONSTRUED TO BE WARRANTED BY MICHAEL SAUNDERS AND COMPANY.



NOTE: NOT DRAWN TO EXACT SCALE

**2122 WHITFIELD PARK AVENUE**  
**SARASOTA, FLORIDA**