



Michael Saunders & Company Commercial
LICENSED REAL ESTATE BROKER

7,500 SQ. FT. SHOWROOM / OFFICE / WAREHOUSE



2240 WHITFIELD INDUSTRIAL WAY

SARASOTA, FLORIDA

LEASE **\$3,125** PER MONTH

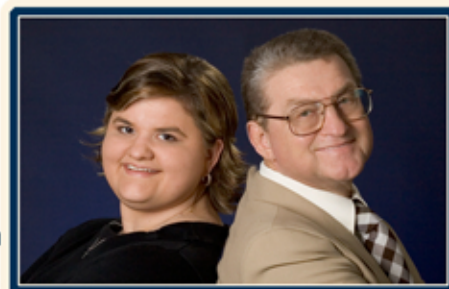
ALL PROPERTIES ARE FEATURED AT

www.SARASOTA-INDUSTRIAL.COM

941.957.3730
OFFICE

ROBERTA "BJ" KOLTON

RobertaKolton@MichaelSaunders.com



941.954.3830
FAX

ROBERT "BOB" KOLTON

RobertKolton@MichaelSaunders.com

SPECIALIZING IN INDUSTRIAL & COMMERCIAL PROPERTIES

Price and availability is subject to change without notice. The information being provided to you is not guaranteed to be free of errors. No independent verification of the accuracy of any information or documentation is represented by the real estate licensee. If you intend to rely on the information provided, you are notified that you should confirm any such information directly with the appropriate governmental authority, the seller and its counsel, or your own independent advisors and counsel. Any copyrighted material shall remain such. Unless provided in writing, no information or documentation provided shall be distributed, disseminated, or reproduced to any third party.

Property Information Sheet

2240 Whitfield Industrial Way
Sarasota

Square Feet: 7,500

Sq. Ft. Office: 1,500

Sq. Ft. Shop: 6,000

Acres: 1.51

Lot Sq. Ft.: 65,775

Lot Dimensions: 200' x 330'

Zoning: L-M

Year Built: 1981

Electrical: 110/220

Amps: 400

Phase: Single

Ceiling Height: 16'

Overhead Doors: 2

Loading Dock: No

Fire Sprinklers: Yes

Parking: 20 +/-

Taxes: \$8,281.80

Occupancy: At lease execution.

Industrial Park: Whitfield Industrial Park

\$0.00

Sales Price

\$0.00

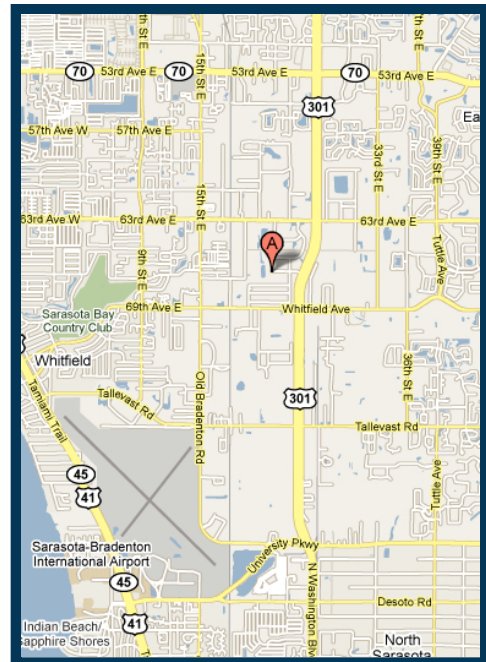
Per Sq. Ft.

\$3,125.00

Lease Rate

\$5.00

Per Sq. Ft.

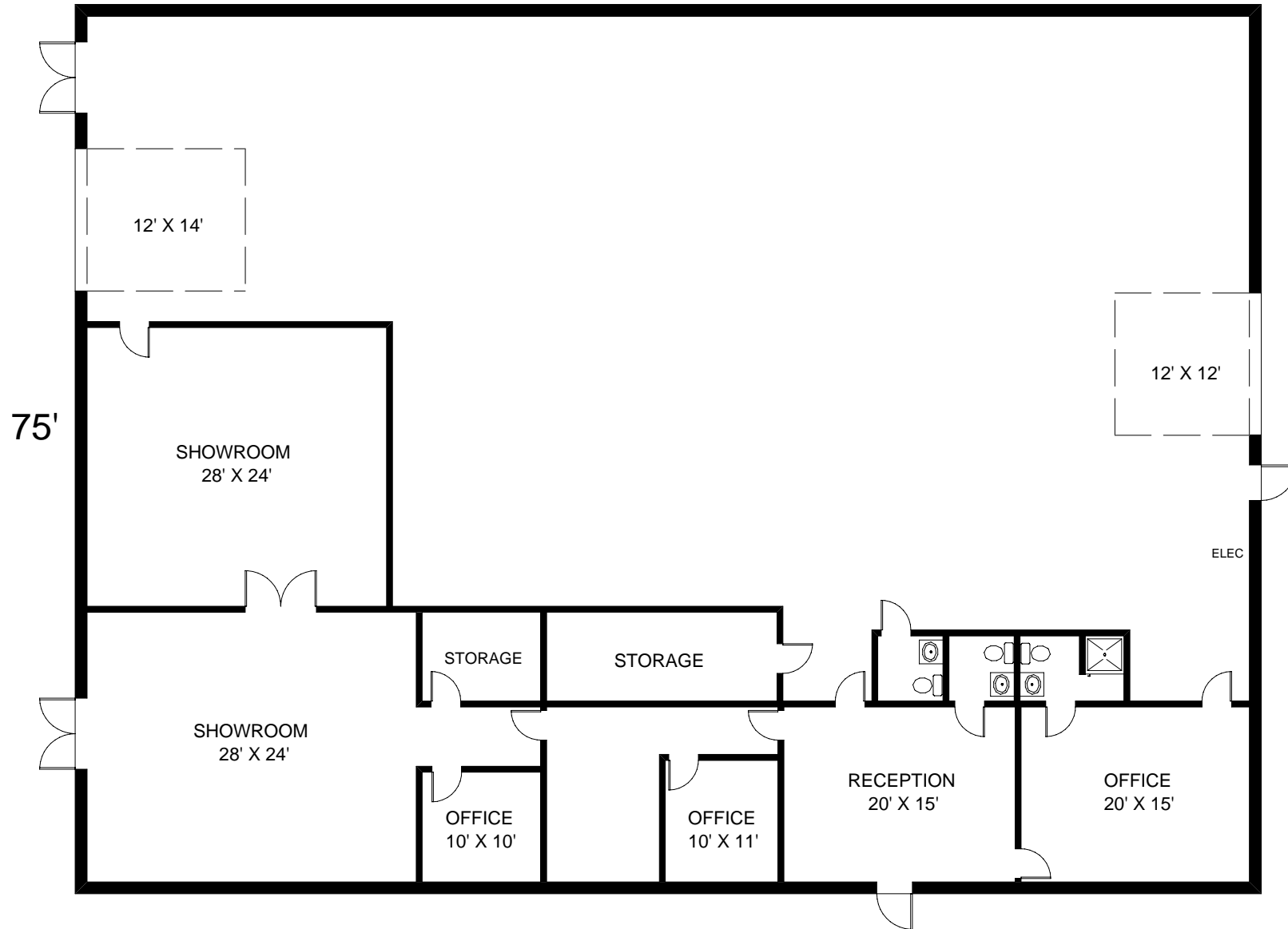


7,500 sq. ft. free standing, steel warehouse with approximately 1,500 square feet of A/C'ed office and showroom area. Warehouse features include 400-amp, single phase electric; 16' ceilings; 1 - 12' x 14' and 1 - 12' x 12' overhead doors. Building sits on 1.51-acre lot, with small fenced storage area in rear, and plenty of parking. Located between Whitfield Avenue and 63rd Avenue, just off Highway 301. Easy access to both Sarasota and Manatee Counties.

Call Bob or Roberta Kolton at 941.957.3730 for more information.

THE INFORMATION CONTAINED HEREIN PRESENTED IS BELIEVED TO BE FACTUAL TO THE BEST OF OUR KNOWLEDGE BUT SHOULD NOT BE CONSTRUED TO BE WARRANTED BY MICHAEL SAUNDERS AND COMPANY.

100'



2240 WHITFIELD INDUSTRIAL WAY
SARASOTA, FLORIDA